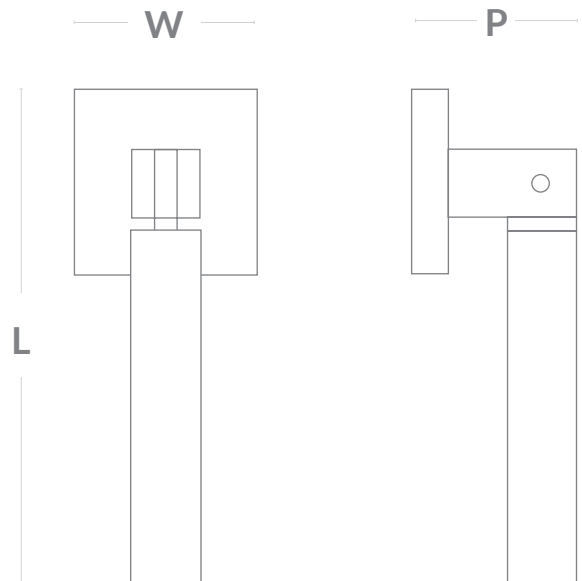
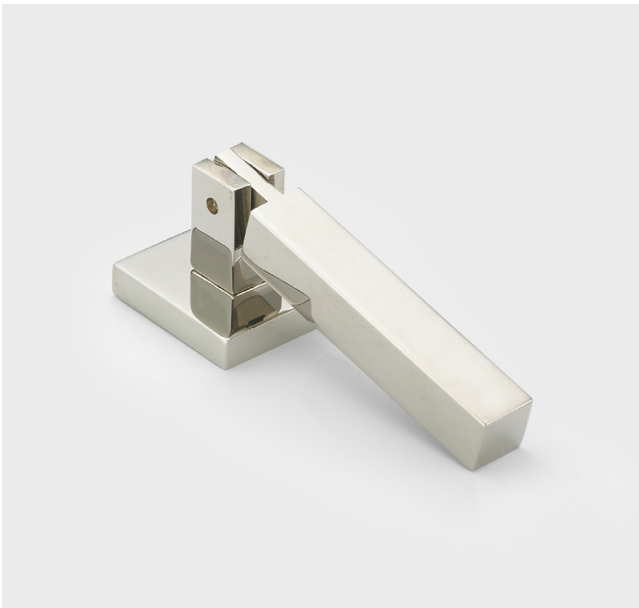


## Bromford Drop Handle



Drop Code	Width (W)	Projection (P)	Length (L)
BRMD/60	25mm / 1"	22mm / 0.8"	68mm / 2.7"



PBL



PBUL



SBL



SBUL



ABL



ABUL



BEL



SAS



SAL



AMB



PNP



PCP



SNP



SCP



NBP



HBN



ASP



ACP



COP



SCL



CBP

Available in all Armac Martin finishes, & supplied with M4 breakoff screws.  
Please see [www.armacmartin.co.uk](http://www.armacmartin.co.uk) for further details.